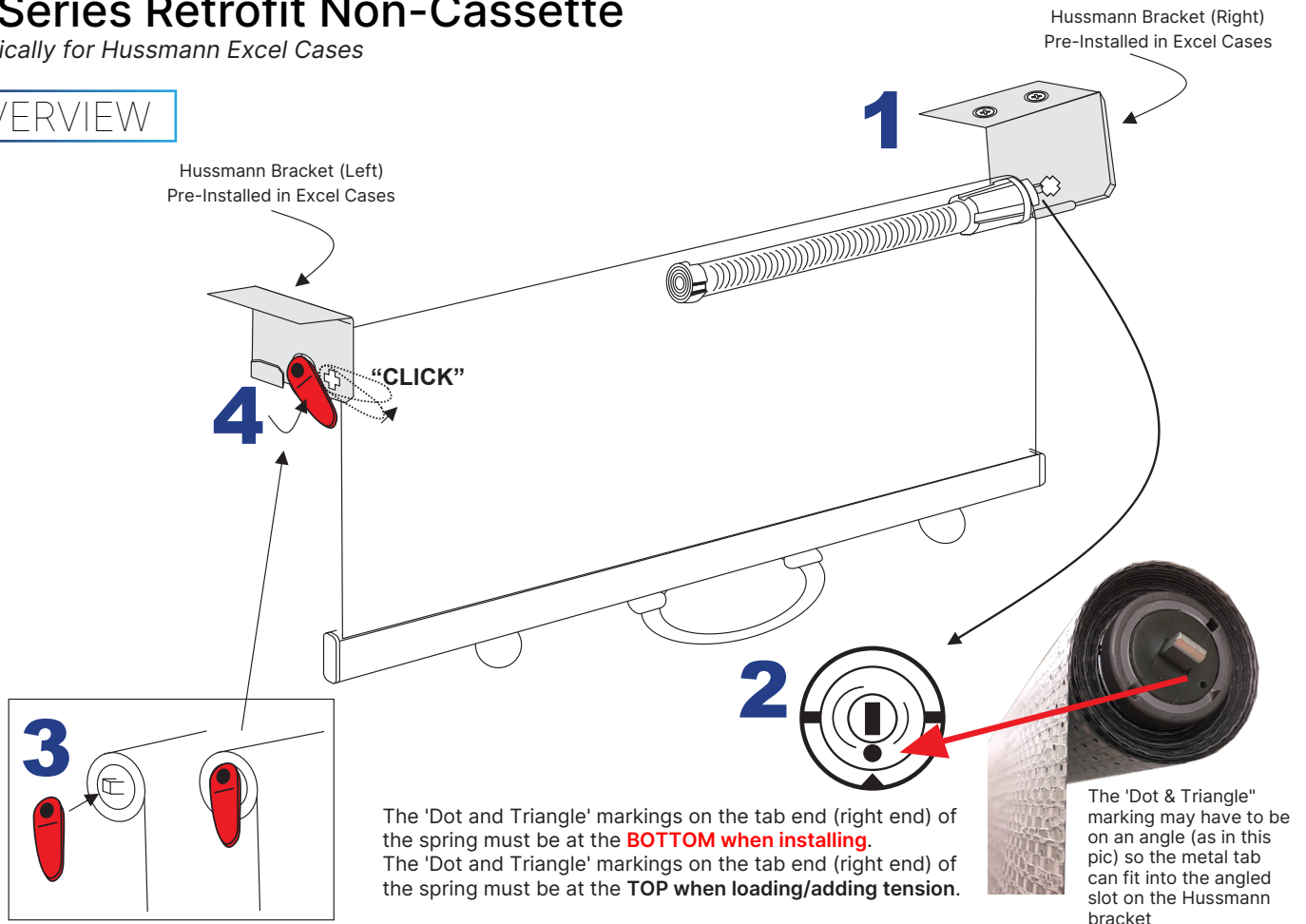


## Installation Instructions (EXCEL)

### XL Series Retrofit Non-Cassette

Specifically for Hussmann Excel Cases

#### OVERVIEW



#### INSTALLATION INSTRUCTIONS

1. Insert **right end** (metal tab) of night cover into right bracket + **hole** (“+” hole is on a slight angle)
  2. **Right end markings MUST be aligned and set like in diagram** (dot/triangle on bottom)
  3. Put red locking-clip on **left tab** (plastic tab) & slide into left bracket slot (keep right end tab in + shaped hole on right bracket)
  4. Turn red locking-clip up until it clicks into position (notch on red locking-clip clicks into “+” shaped hole on left bracket)
- \* Once installed, if cover only rolls up part way, OR rolls up extremely fast (ie as if there’s no braking system), it means night cover is not installed correctly. You must remove night cover from the brackets, and install again.
  - \* Use caution when removing night cover from brackets - it is easy for cover to lose tension once removed from the brackets.
  - \* If spring unwinds and full tension is lost, use winding tool/vises grips and wind spring end (right metal tab) tab approx. 13 full rotations to re-tension spring. Note dot/triangle must be aligned at the top (see picture above) for adding spring tension.
  - \* Repeat steps 1-4 above (ensuring dot/triangle is now aligned at bottom) to re-install.



Clean the Econofrost Night Cover using a soft, non-abrasive cloth, water and soap. Retract the night cover slowly.